

OBSERVATION TECHNIQUES

v6.6 June 2016
© John Ziersch

Arafura Driving Academy
T/A Zipper's Driving School
john.ziersch@bigpond.com
www.drivingnt.com
0417 823 209



IMPORTANT

For official information on the driving test, go to the MVR website:

<https://nt.gov.au/driving/licences/get-your-driver-licence/sit-a-driving-test> Download “- A Guide to the Driving Test”.

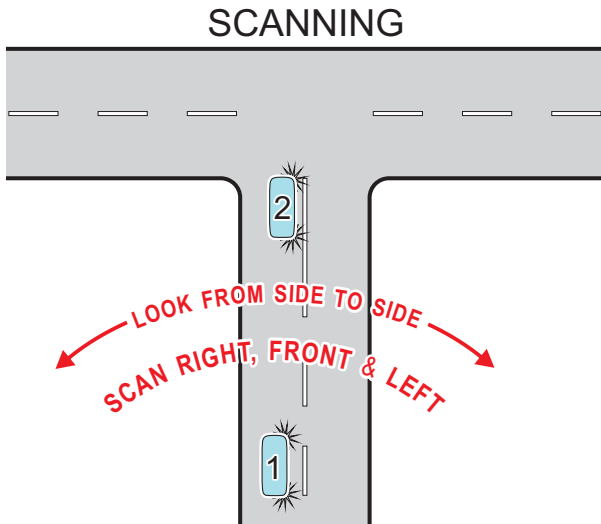
GOOD OBSERVATIONS:

- mirror checks
- scanning
- blindspot checks

are essential for safe driving.

The examiner will check that you perform correct observations throughout your test.

Missing three or more required observations will result in a fail.

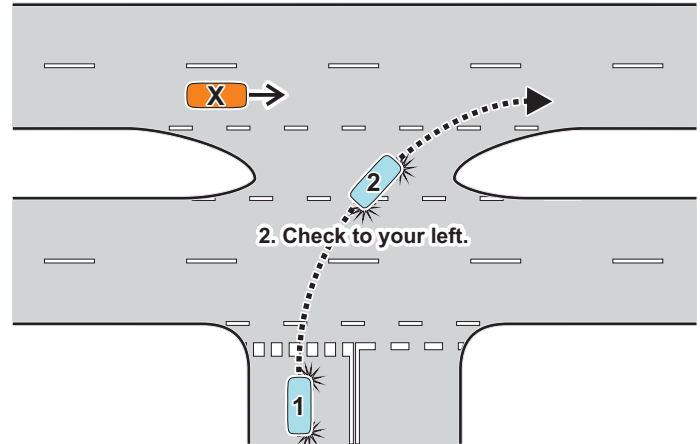


1 to 2. SCAN continuously:

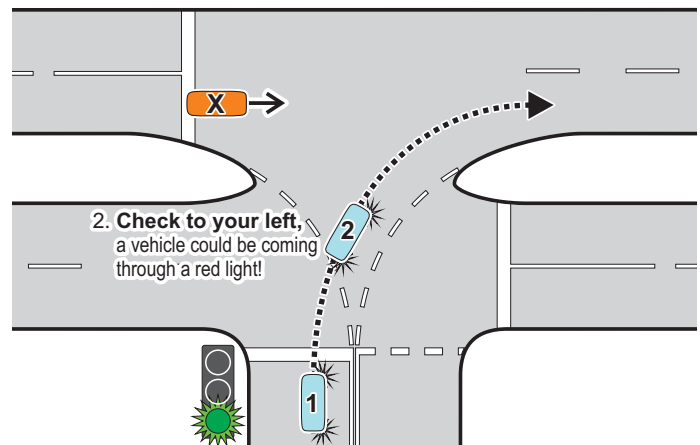
keep your eyes moving, sweeping from side to side and not staring at one area or line of traffic.

Scan when approaching an intersection, but also when travelling straight ahead.

Scanning also includes checking mirrors, instruments and gauges.



1. When approaching an intersection, scan continuously (see notes on scanning)



1. When approaching an intersection, scan continuously (see notes on scanning)

Waiting to turn RIGHT while giving way to oncoming traffic at an open intersection.

Waiting position (car No.1): ✓

Stop your car at the point where you would be about to turn into the side road.

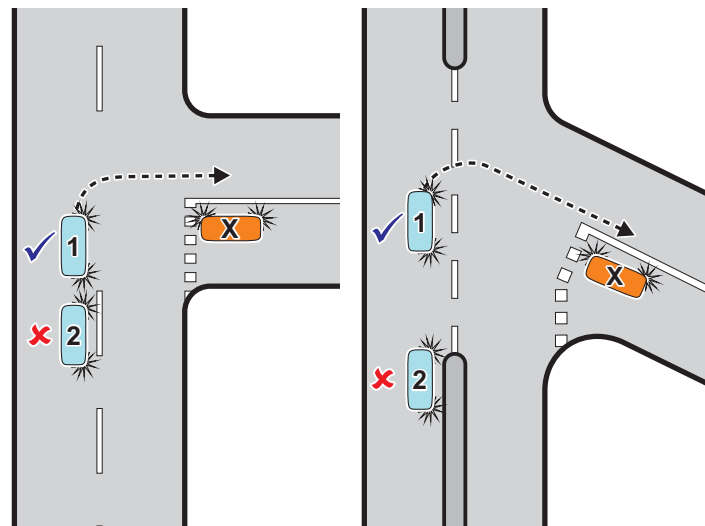
Have the car & steering pointed straight ahead to prevent being pushed from behind into oncoming traffic.

Waiting position (car No.2): ✗

Waiting back here causes problems ...

(a) You have to move further forward before turning (or you might turn into the wrong side of the road), taking longer to complete the turn and increasing the risk of collision with oncoming traffic.

(b) You have left room for car “X” to enter the intersection - “X” may become impatient and try to turn without giving way, causing confusion and the risk of collision.



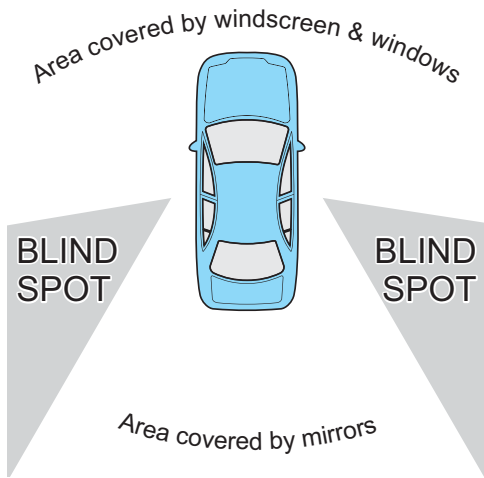
HEAD CHECKS & SHOULDER CHECKS



T/A Zipper's Driving School
john.ziersch@bigpond.com
www.drivingnt.com
0417 823 209

the red arrow represents DANGER!

Vehicles, motorbikes, cyclists etc trying to pass you on the inside of your turn, or trying to turn right from the left lane when illegal to do so, or going through a red light, or entering a roundabout illegally, .

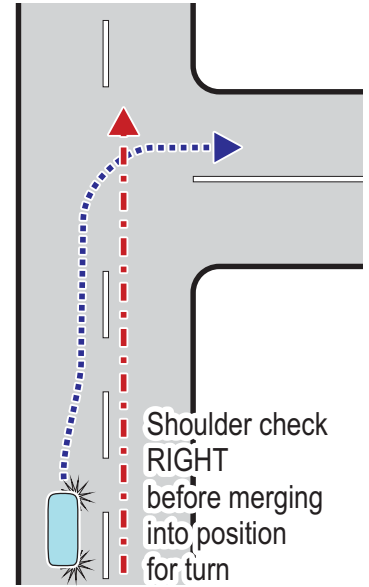
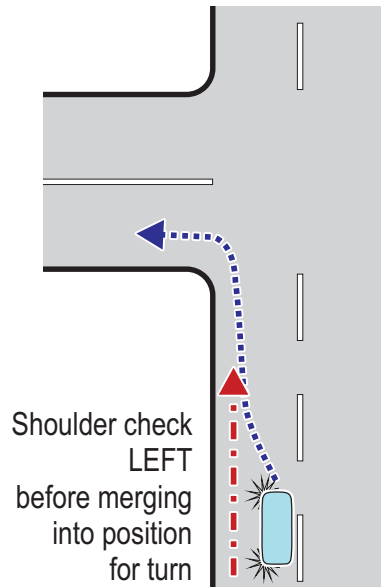


A "shoulder check" or "head check" is required at certain times to view the areas not covered by the mirrors.

Steady the steering wheel then turn your head to the left or the right (chin on shoulder), avert the eyes to look slightly backwards.

A quick look, do not stare!

Recommended: glance in the appropriate side-mirror just before the shoulder check.



You must check your relevant blind spot(s) before:

- Moving off from the kerb, or joining the traffic stream.
- Pulling over against the kerb.
- Changing lanes.
- Merging or diverging.
- Reversing (do a full 360° scan before moving).
- Turning left or right.
- Leaving a roundabout.

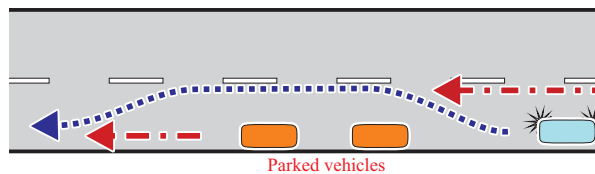
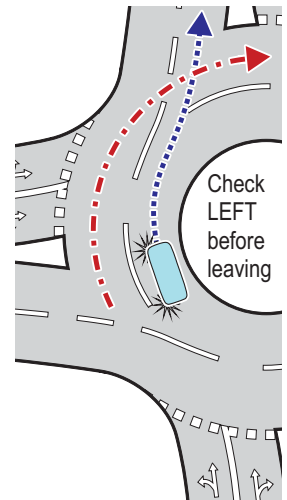
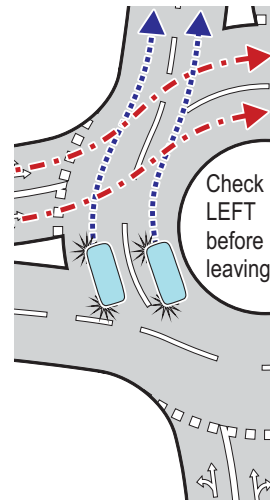
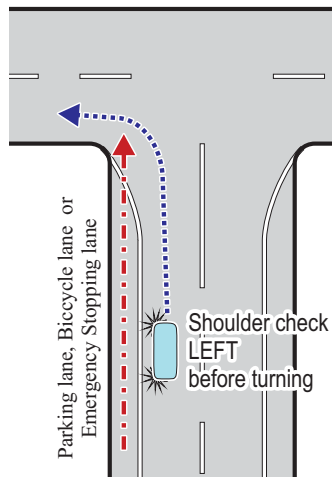
Failure to check your blind spots could result in a dangerous situation (and a fail of your driving test).

Adjusting your mirrors

After adjusting your seat, adjust your mirrors so that the centre mirror gives you a view of as much of your rear window as possible.

Adjust the side mirrors up/down so that they point straight behind you (not down at the ground).

Now adjust them sideways so that you can just see the side of the car in the inside corner of the mirror (e.g. a door handle).



Passing parked vehicles: A shoulder check RIGHT is required if moving sideways the width of a car or more.

