

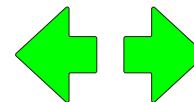
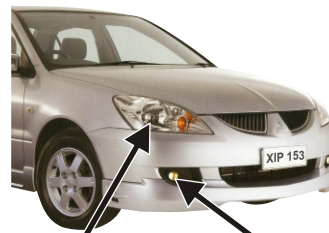


Copyright © 2006 - 2007 John Ziersch  
Zipper's Driving School



"Check Engine"

**ANTI LOCK**  
Anti-lock Brakes  
malfunction



Indicator (signal)  
lights

**CRUISE**  
Cruise Control  
switched on



Driver's Seatbelt  
not fastened



Oil Pressure  
low



Battery discharge  
(not charging)



Handbrake  
on



Headlights  
on high beam



Front Fog Lights  
on

**SRS**

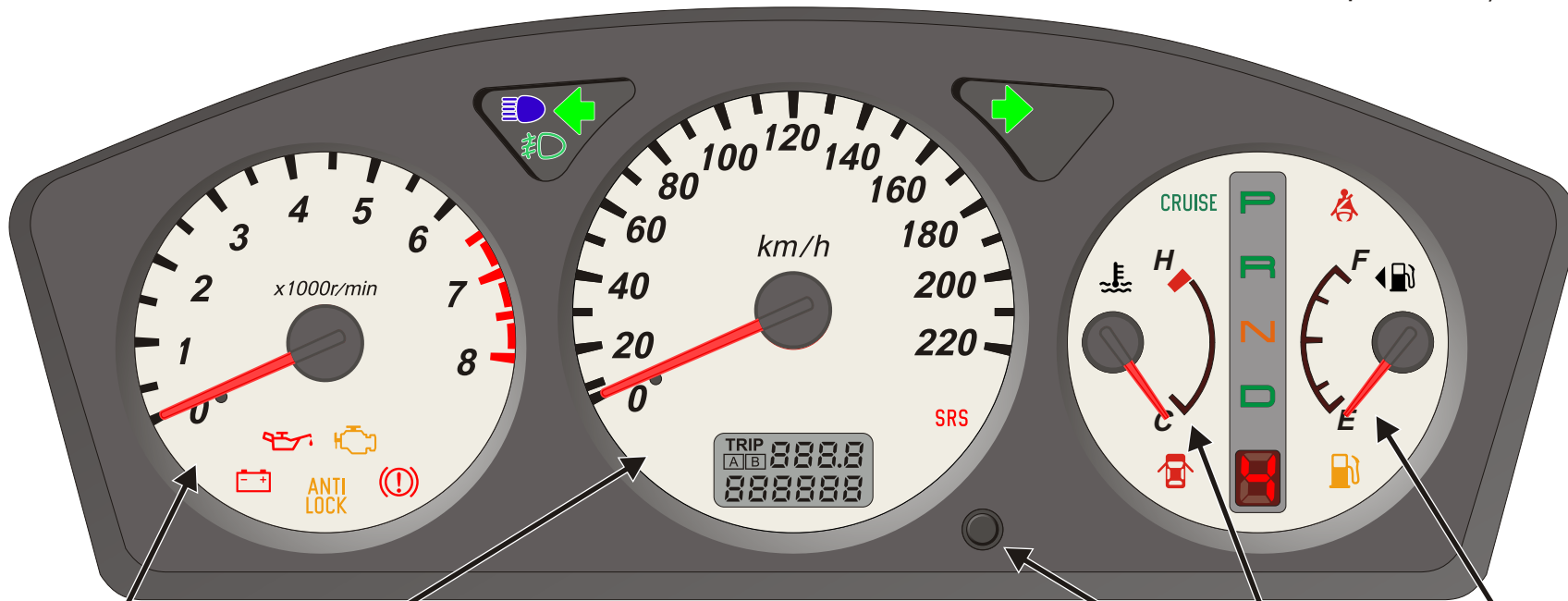
Supplementary  
Restraint System  
(air bags,  
seat belt pre-tensioners)



Door or Boot Lid  
ajar



Fuel  
low



PARK

REVERSE

NEUTRAL

DRIVE

Gear Number  
("sports mode")

TACHOMETER  
(engine speed)

SPEEDOMETER  
(car speed)

Trip Meter "A"

Trip Meter "B"

Push to reset  
trip meter

FUEL GAUGE

ENGINE TEMPERATURE  
GUAGE



Odometer  
(distance from new)