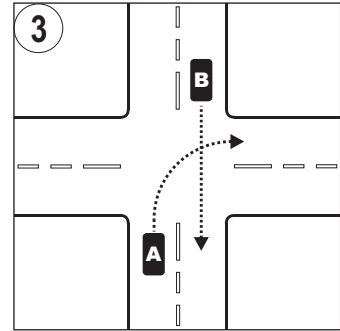
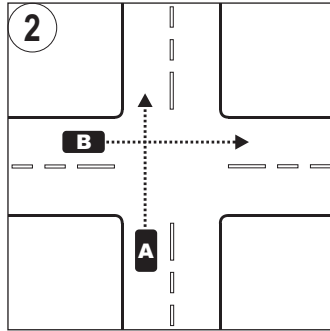
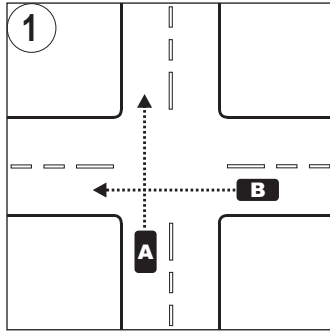
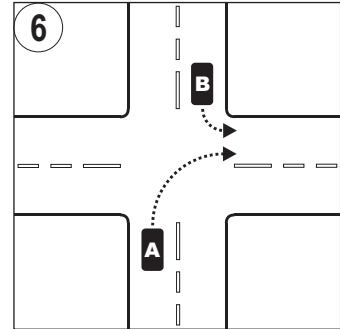
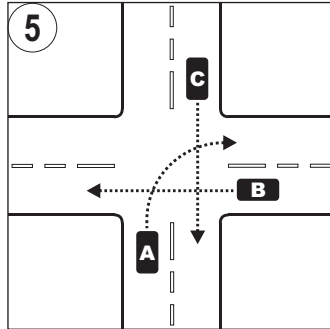
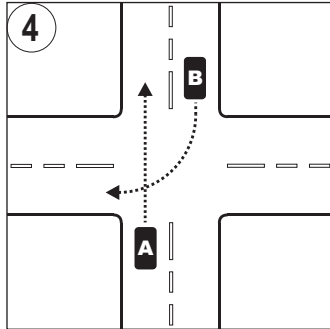


Practice Questions - GIVE WAY RULES

Do you know the Give Way rules? Try these practice questions. (See NT Road User's Handbook pages 78-89).



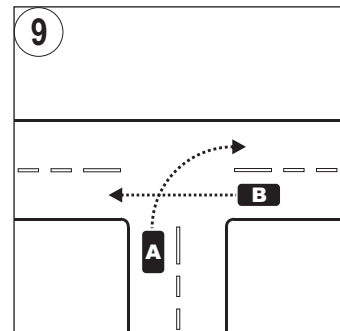
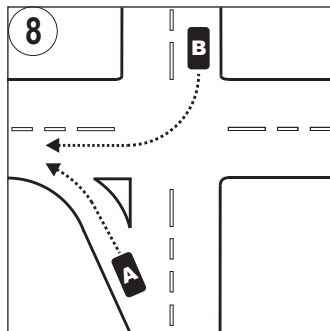
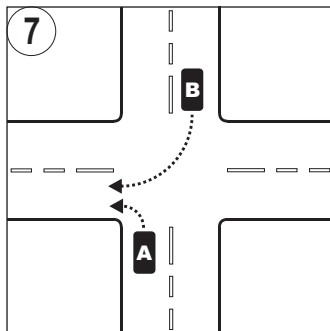
Q1, Q2, Q3: Which cars give way?



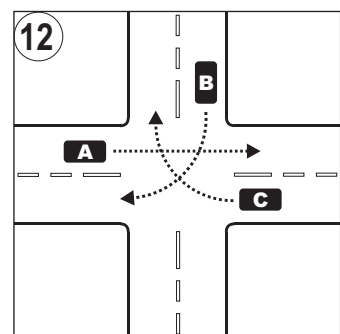
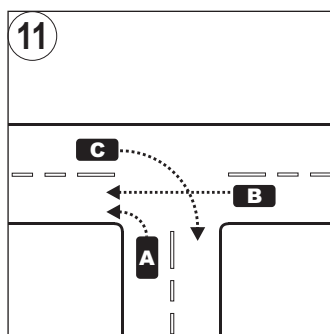
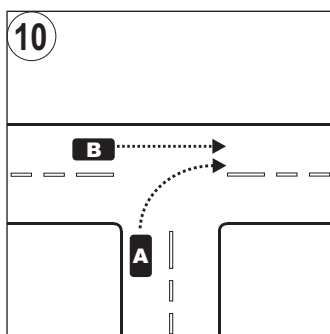
Q4: Which car gives way?

Q5: In what order do the cars go?

Q6: Which car gives way?

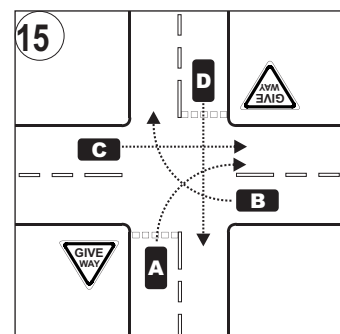
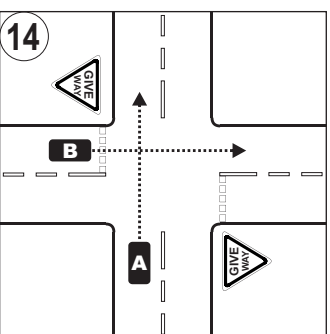
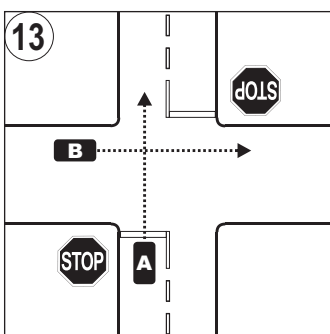


Q7, Q8, Q9: Which car gives way?



Q10: Which car gives way?

Q11, Q12: In what order do the cars go?

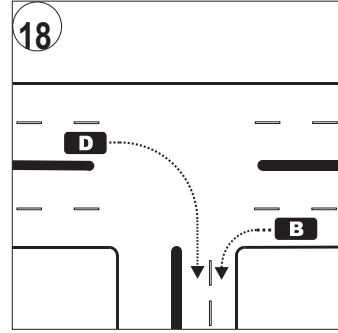
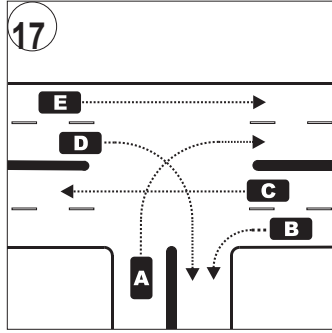
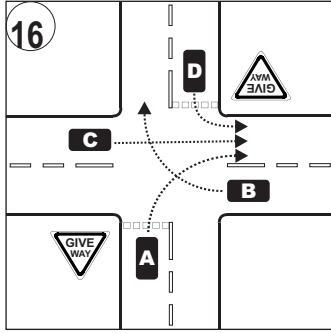


Q13, Q14: Which car gives way?

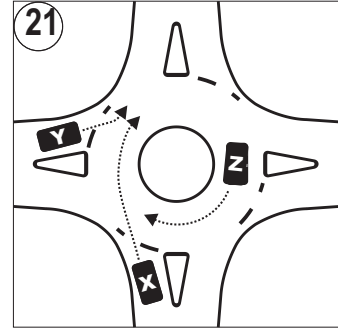
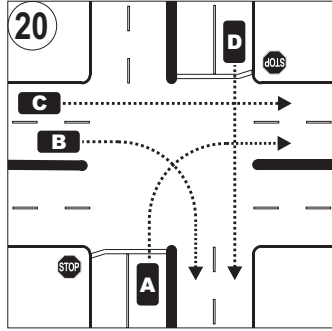
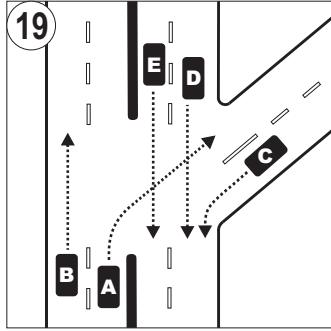
Q15: In what order do the cars go?

Practice Questions - GIVE WAY RULES

How well do you know the Give Way rules? Try these practice questions. (See NT Road User's Handbook pages 78-89).

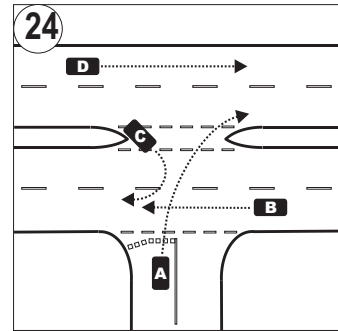
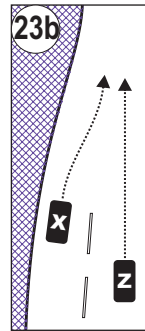
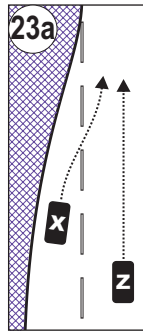
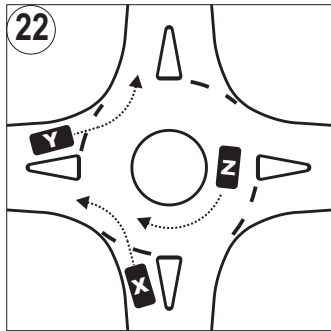


Q16, Q17, Q18: In what order do the cars go?



Q19, Q20: In what order do the cars go?

Q21: Which car(s) give way?



Q22, Q23a, Q23b, Q24: Which car(s) give way?

- Q1. A gives way (B is on the road on the right)
- Q2. B gives way (A is on the road on the right)
- Q3. A gives way (turning across oncoming traffic)
- Q4. B gives way (turning across oncoming traffic)
- Q5. C, B, A ("give way to road on the right" rule)
- Q6. A gives way (turning across oncoming traffic)
- Q7. B gives way (turning across oncoming traffic)
- Q8. A gives way (is in a slip lane)
- Q9. A gives way (is on a terminating road)
- Q10. A gives way (is on a terminating road)
- Q11. B, C, A (C turning across oncoming traffic, A is on terminating road, goes last).
- Q12. A, B, C ("give way to road on the right" rule)
- Q13. A gives way (facing Stop sign & line)
- Q14. B gives way (facing Give Way sign & line)
- Q15. C, B, D, A (A & D facing Give Way signs & lines, A & B turning across oncoming traffic).
- Q16. C, B, D, A (B turning across oncoming traffic gives way to C, A & D face Give Way signs & go next, A turning across oncoming traffic gives way to D)
- Q17. E & C & B together, then D, then A
- Q18. D & B together, providing they each turn into their first lane. Otherwise D gives way to B.
- Q19. B & E & D together, then A & C together (this is a T-intersection, it is NOT a Y-intersection as one road comes to an end)
- Q20. B & C together, then D, then A
- Q21. Y gives way to X, X gives way to Z
- Q22. X gives way to Z (Y gives way to X if X is not signalling!)
- Q23a. X gives way (lane ends, X must cross broken line)
- Q23b. Z gives way (both lanes end at same point, cars give way to cars in front)
- Q24. A and C give way (A in terminating road, C doing U-turn)

NUMBERS you need to KNOW

NO STOPPING or PARKING - MINIMUM DISTANCES

1 m from a **Fire Hydrant**

10 m from an **Intersection, Bridge or Culvert**

10 m after a **Bus Stop or Crossing**

20 m from an intersection with **Traffic Lights**

20 m before a **Bus Stop or a Crossing**

OTHER DISTANCES

200 m DIP your headlights (use low beam) when this far from another vehicle.

200 m minimum distance between two long vehicles on the highway
(e.g. between a truck, and a car towing a caravan).

SAFE FOLLOWING DISTANCES between vehicles

2 seconds **GOOD** conditions

4 seconds **POOR** conditions

(e.g.: raining, fog, slippery road surface, poor visibility or at night, carrying a heavy load or towing, if the car behind is following too closely, or you are following behind a large vehicle obstructing your view.)

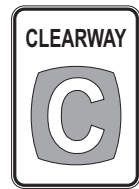
PARKING and STOPPING



NO PARKING

Don't stop UNLESS:

- ♦ picking up / dropping off passengers or goods,
- ♦ for no more than 2 minutes,
- ♦ driver stays with the vehicle (within 3 metres).



Anything That ISN'T
"No Parking" (see left) is
NO STOPPING

e.g.:

NO STOPPING or NO STANDING
CLEARWAY
DISABLED PARKING BAYS
YELLOW EDGE LINES on a ROAD
LOADING ZONES
BUS ZONES
TAXI ZONES

Here's an easy way to remember what the signs mean ...

1. Memorise the "No Parking" rules (see LEFT panel).
2. If the sign is NOT a "No Parking" sign, it means NO STOPPING (see RIGHT panel).

Note: "NO STANDING" & "NO STOPPING" are the same.