

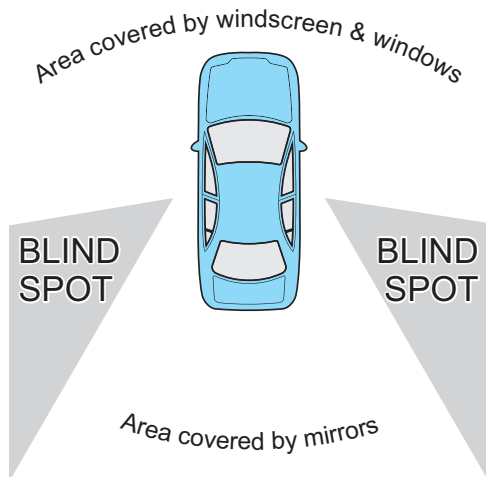
HEAD CHECKS & SHOULDER CHECKS



T/A Zipper's Driving School
0417 823 209
john.ziersch@bigpond.com
www.drivingnt.com

the red arrow represents DANGER!

E.g. vehicles, motorbikes, cyclists etc trying to pass you on the inside of your turn, or trying to turn right from the left lane when illegal to do so, or going through a red light, or entering a roundabout without giving way.

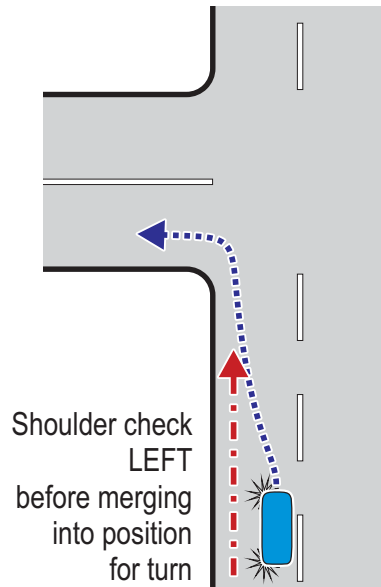


A "shoulder check" or "head check" is required at certain times to view the areas not covered by the mirrors.

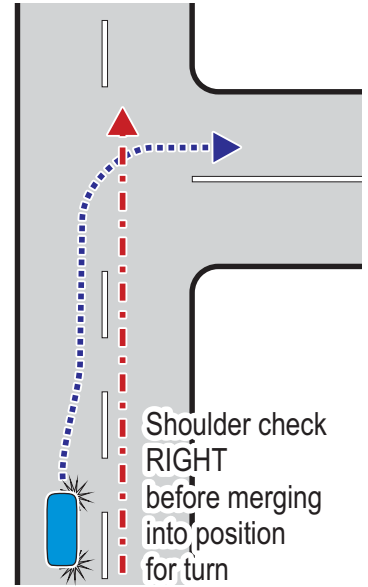
Steady the steering wheel then turn your head to the left or the right (chin on shoulder), avert the eyes to look slightly backwards.

A quick look, do not stare!

Recommended: glance in the appropriate side-mirror just before the shoulder check.



Shoulder check LEFT before merging into position for turn



Shoulder check RIGHT before merging into position for turn

Always check your relevant blind spot(s) before:

- Moving off from the kerb, or joining the traffic stream.
- Pulling over against the kerb.
- Changing lanes.
- Merging or diverging.
- Reversing (do a full 360° scan before moving).
- Turning left or right.
- Leaving a roundabout.

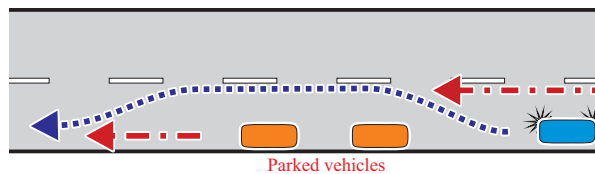
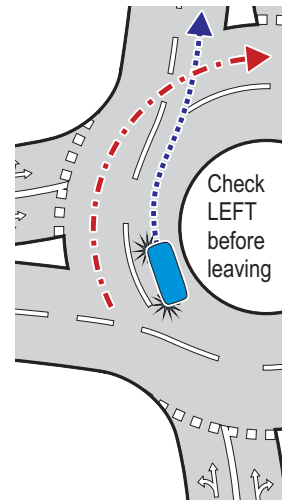
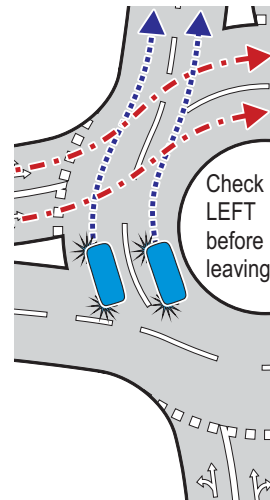
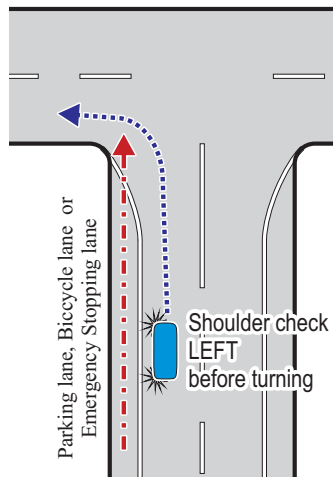
Failure to check your blind spots could result in a dangerous situation (and a fail of your driving test).

Adjusting your mirrors

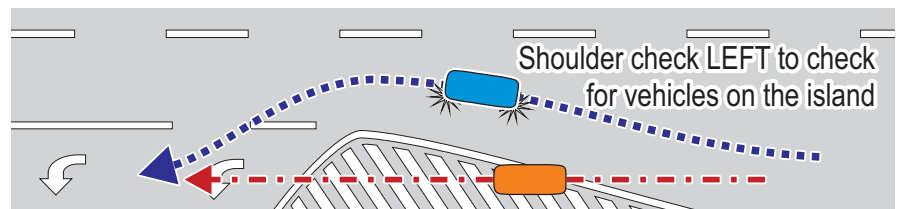
After adjusting your seat, adjust your mirrors so that the centre mirror gives you a view of as much of your rear window as possible.

Adjust the side mirrors up/down so that they point straight behind you (not down at the ground).

Now adjust them sideways so that you can just see the side of the car in the inside corner of the mirror.



Passing parked vehicles: A shoulder check RIGHT is required if moving sideways the width of a car or more.



OBSERVATION TECHNIQUES

v7.0 April 2017
© John Ziersch

T/A Zipper's Driving School
0417 823 209
john.ziersch@bigpond.com
www.drivingnt.com



IMPORTANT

For official information on the driving test, go to the MVR website:

<https://nt.gov.au/driving/licences/get-your-driver-licence/sit-a-driving-test> Download “- A Guide to the Driving Test”.

GOOD OBSERVATIONS:

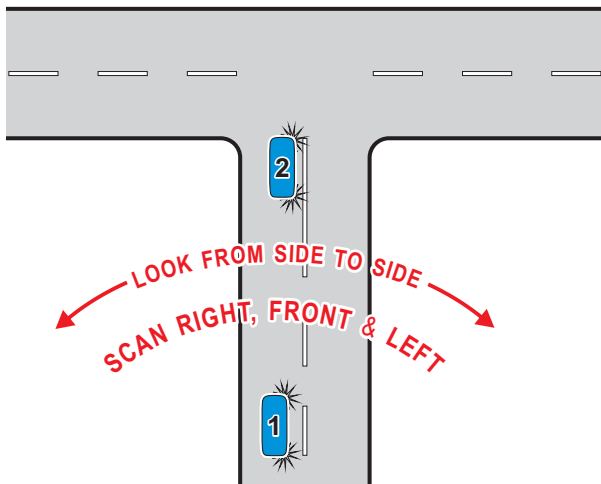
- mirror checks
- scanning
- head checks and blindspot checks

are essential for safe driving.

The examiner will check that you perform correct observations throughout your test.

Omitting three or more required observations will result in a fail.

SCANNING



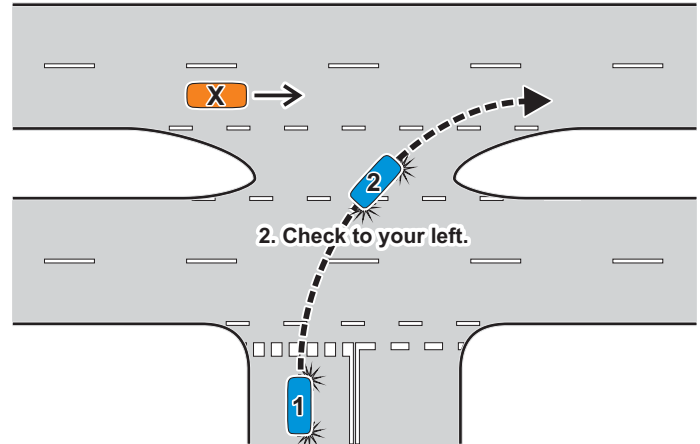
1 to 2. SCAN continuously:

Don't “stare” - keep your eyes moving, sweeping from side to front to side.

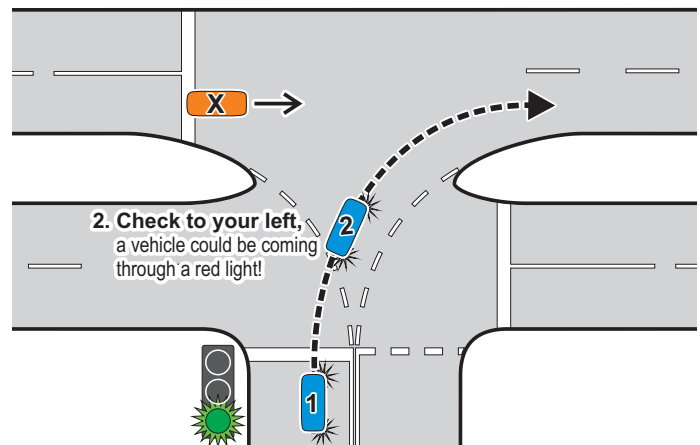
Scan when:

- approaching an intersection, and
- travelling straight ahead.

Scanning also includes regularly checking mirrors, instruments and gauges.



1. When approaching an intersection, scan continuously (see notes on scanning)



1. When approaching an intersection, scan continuously (see notes on scanning)

Waiting to turn RIGHT while giving way to oncoming traffic at an open intersection.

Waiting position No.1 (car No.1): ✓

Stop your car at the point where you would be about to turn into the side road.

Have the car & steering pointed straight ahead to prevent being pushed from behind into oncoming traffic.

Waiting position No.2 (car No.2): ✗

Waiting back here causes problems ...

- You have to move further forward before turning, taking longer to complete the turn and increasing the risk of collision.
- Your view might be obstructed.
- You have left room for car “X” to enter the intersection - “X” may become impatient and try to turn without giving way to you.
- You could turn into the wrong side of the road.

