

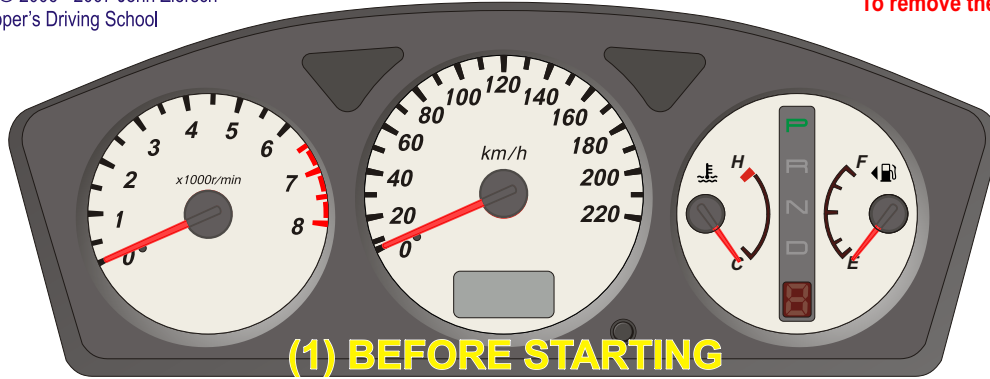
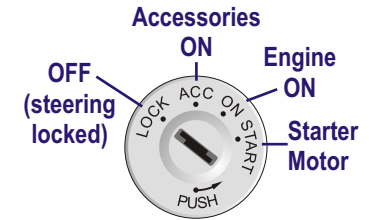


Copyright © 2006 - 2007 John Ziersch
Zipper's Driving School

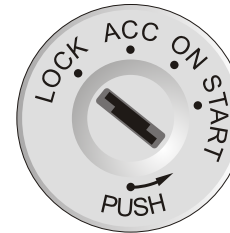
STARTUP SEQUENCE Mitsubishi Lancer

CAUTION: If the key won't turn, **DON'T FORCE IT**
you could easily break it!
It could be the **steering lock** - turn the wheel a little, hold
the wheel steady and try again.

To remove the key, first push in while turning anticlockwise ↺

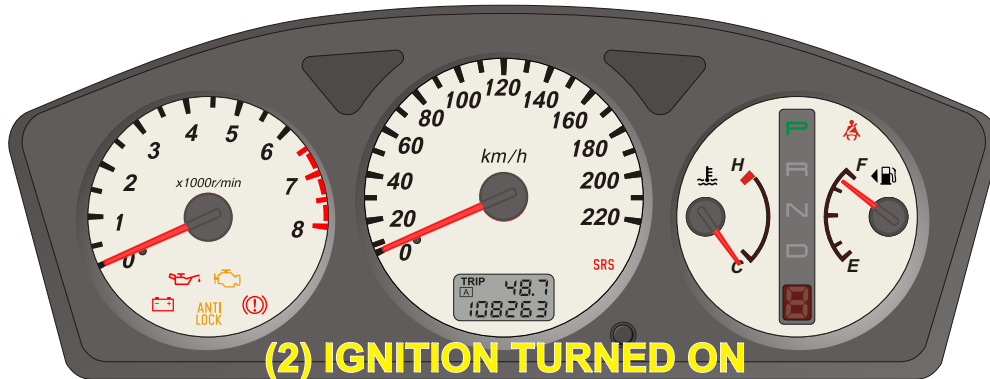


(1) BEFORE STARTING



1. PREPARE to START

Check handbrake is ON,
Apply the FOOT BRAKE
Selector in 'P' (PARK)

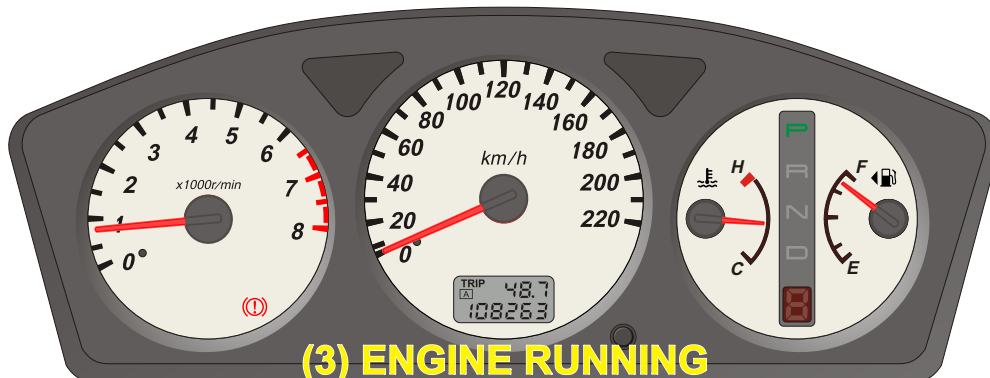


(2) IGNITION TURNED ON



2. TURN IGNITION ON

Turn ignition ON (2 clicks)
Check **WARNING LIGHTS**
for correct functioning



(3) ENGINE RUNNING



3. START ENGINE

START engine
(let go of key when engine fires)
Check **WARNING LIGHTS**
& **GAUGES**