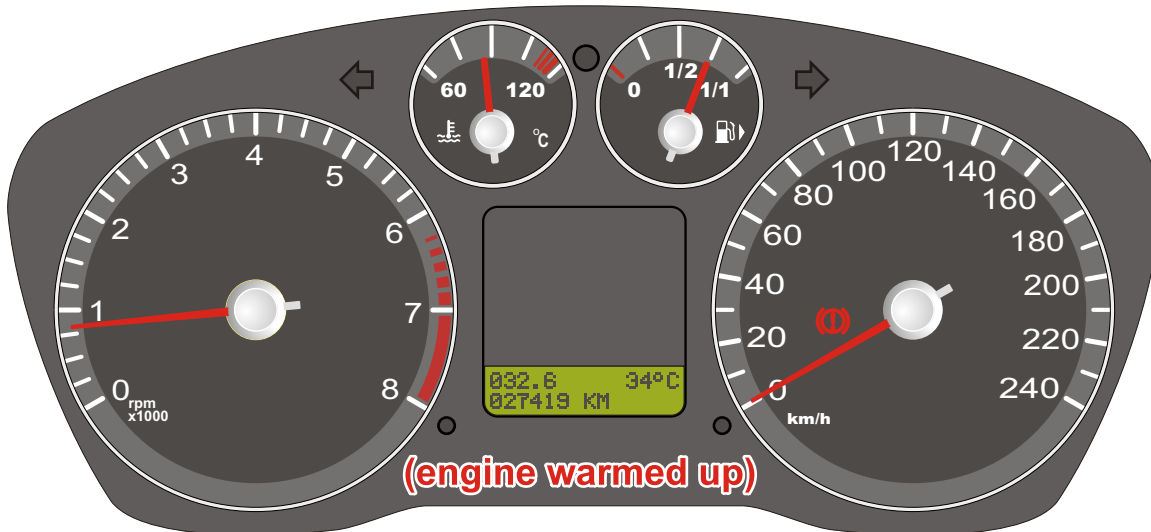
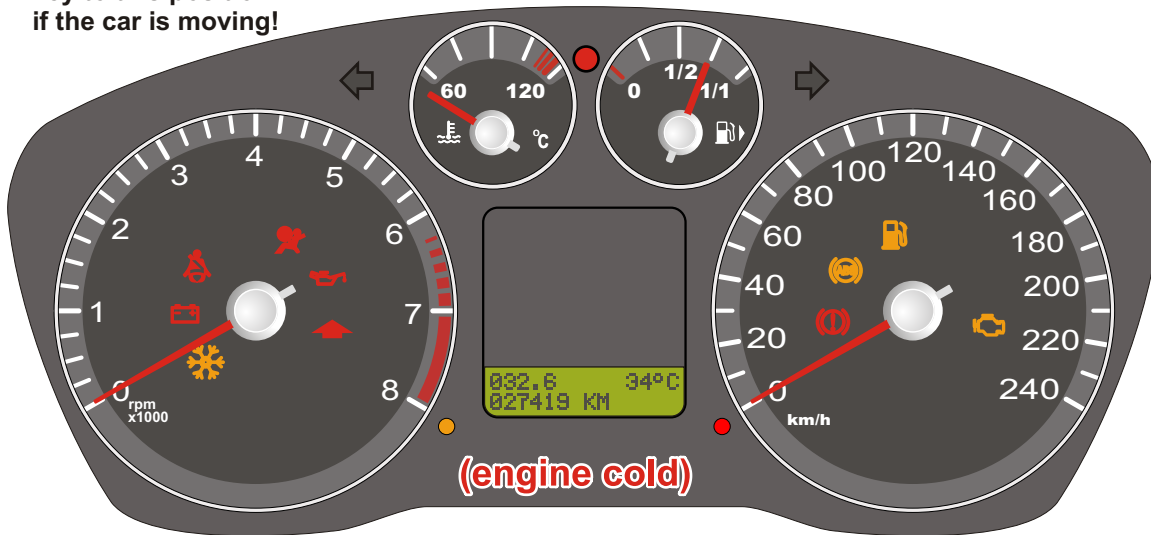
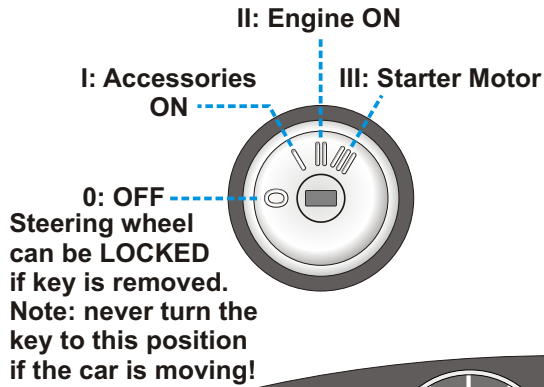
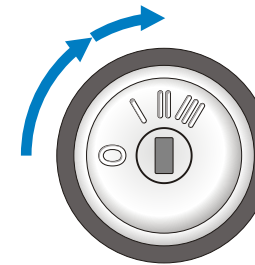


STARTUP SEQUENCE

Ford Focus (manual)



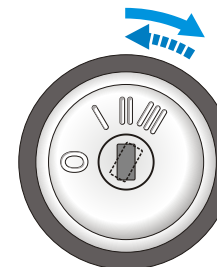
IGNITION ON



- 1
 - Check handbrake is ON
 - Clutch DOWN & hold
 - Gear lever in NEUTRAL
 - Recommended: switch off accessories such as lights & air conditioning

- 2
 - Turn ignition ON (2 clicks)
 - Check WARNING LIGHTS

START ENGINE



- 3
 - START engine (let go of key when engine fires)
 - Check WARNING LIGHTS & GAUGES for correct operation.