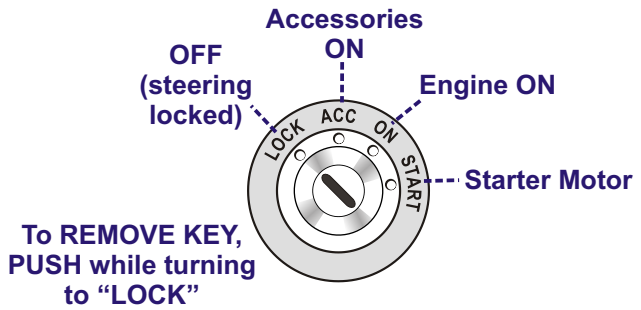
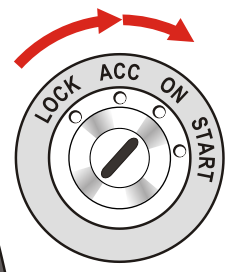
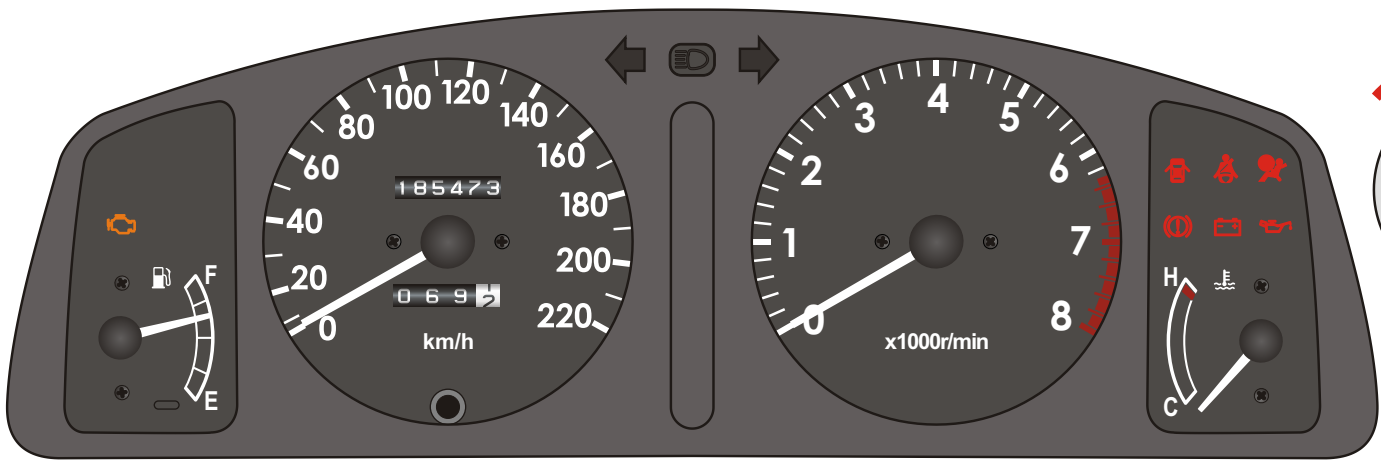


STARTUP SEQUENCE Toyota Corolla (manual)

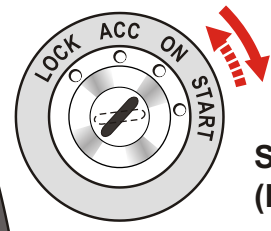
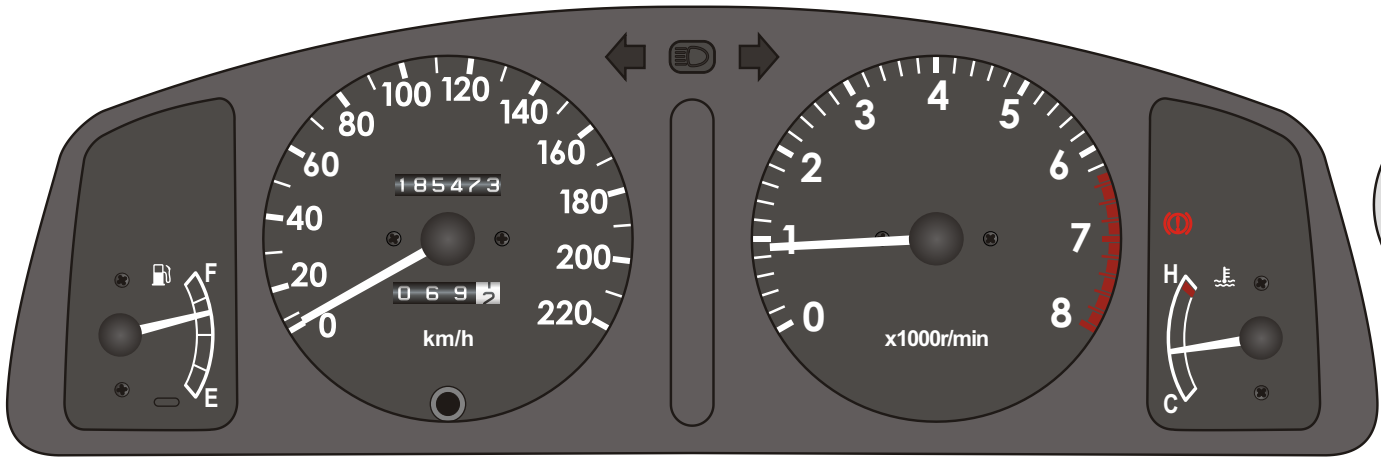


1
Check handbrake is ON
Clutch DOWN & hold
Gearlever in NEUTRAL



2
Turn ignition ON (2 clicks)
Check WARNING LIGHTS

IGNITION ON



3
START engine
(let go of key when engine fires)
Check WARNING LIGHTS & GAUGES

ENGINE RUNNING (warmed up)